

# PLANT REPORT



## Reception of imported sludge at Hamburg Wasser SAX 3898-3903

On Germany's largest waste water treatment plant Köhlbrandhöft SAXLUND an additional method of waste disposal for communal sewage sludge has been created. The imported sludge and internal sludge were dried and burnt in a Mono incineration plant. SAXLUND has provided the complete storage, discharging, conveying and metering facilities as well as the electrical control equipment. The imported sludge cake is delivered by tipping truck to a reception bunker equipped with SAXLUND Push Floor Discharge. It is fed efficiently via the combined discharge/pre-press screw to the both SAXLUND Duplex Solids Handling Pump. The pumps convey the sewage sludge to the storage silo. From the storage silo, the sewage sludge is pumped via the reliable SAXLUND Sliding Frame discharge and Solids Handling Pump via distributor valves into 3 dryers.

For the protection of following machines a foreign body separator is installed in the pressure pipeline and retracts foreign parts exceeding 30mm.

To prevent loss of pressure, the long piping has been fitted with a lubricant dosing device.

Every silo is fitted with a continuous level indicator, CH<sub>4</sub> monitoring instrument and a ventilation system for the biogas.

For the incineration plant VERA Saxlund had delivered 3 Push Floor Dosing boxes for screenings in 1995.

### TECHNICAL DATA:

Year of construction	: 2011
Material	: sewage sludge
Bulk density	: 1000 kg/m <sup>3</sup>
Dry solids content	: 18..30 %

#### Reception silo (rectangular) with Push Floor Discharge

Silo capacity	: 55 m <sup>3</sup>
Discharge rate	: 2x 25 m <sup>3</sup> /h
Discharge/pre-press screw, type	: 2x DDA

#### 2-Cylinder Solids Handling Pump

Duplex Solids Handling Pump, type	: SPx 2250-1500
Conveying capacity	: 25 m <sup>3</sup> /h
Conveying pressure, max	: 40 bar
Motor rating	: 90 kW
Pipework, DN200 PN40	: approx. 20 m

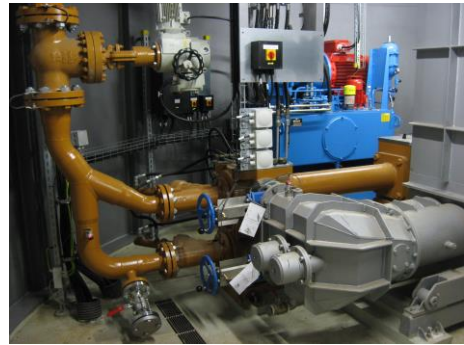
#### Circular Storage Silo with Sliding Frame Discharge

Silo capacity	: 800 m <sup>3</sup>
Discharge rate (variable)	: 10 m <sup>3</sup> /h
Discharge screw, type	: DM



### 2-Cylinder Solids Handling Pump

Solids Handling Pump, type	: SP 2180-1000
Conveying capacity (variable)	: 10 m <sup>3</sup> /h
Conveying pressure,max.	: 64 bar
Motor rating	: 55 kW
Pipework, DN125 PN100	: approx. 60 m



[www.saxlund.de](http://www.saxlund.de)

Germany:  
**Saxlund International GmbH**

Heidberg 1, 4 + 5  
29614 Soltau-Harber  
Tel.: +49 (0) 51 91/98 11-0  
Fax: +49 (0) 51 91/98 11-39  
E-Mail: [info@saxlund.de](mailto:info@saxlund.de)

**Companies and Agencies**  
Great Britain

Sweden

### **Other products for silo and conveying technology:**

- **Saxlund Int. Sliding Frames**
- **Saxlund Int. Push Floors**
- **Tubefeeder®**
- **Saxlund Int. Rotors**
- **Saxlund Int. Solids Handling Pumps**
- **Troughed Chain Conveyors**
- **Screw Conveyors**
- **Elevators**
- **Rotary Valves**
- **Combustion Plants**
- **Control Svstems**

