

REXCELL 9MW Steam, 2010

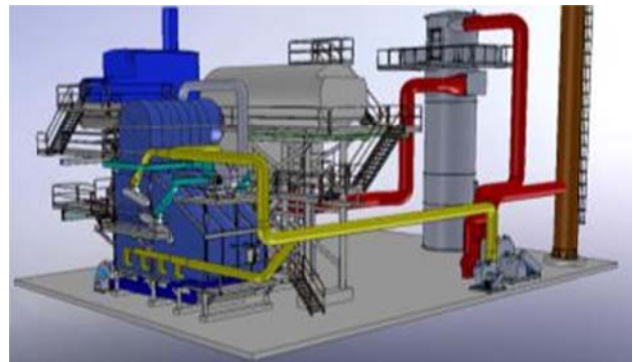


Co-combusting Biomass Energy Plant 9MW Steam, 20 bar

The provided at Rexcell Tissue & Airlaid's Skåpafors plant was installed to facilitate a move away from energy sources such as oil and electricity.

The new biomass plant supplied by Saxlund was selected to supply the production process' power demand. The boiler feed fuel is mix of wood chips and shavings 35-55% moisture content and process derived waste product from paper production in the form of paper sludge.

The co-firing plant was supplied in compliance with the requirements of WID Directive.



Power: 9MW steam, 20 bar
Customer: Rexcell Tissue & Airlaid
Location: Skåpafors, Sweden
Activities: Paper mills, napkin manufacturer
Year built: 2010