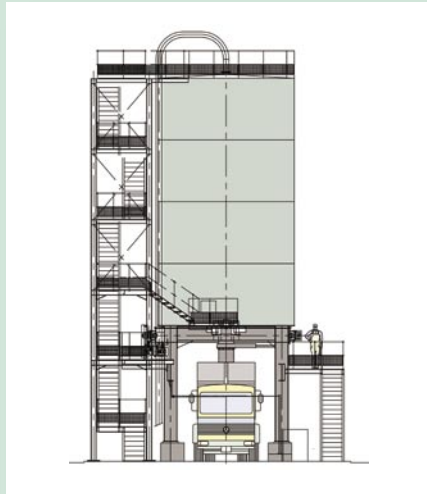




WASTE WATER WORLDWIDE PROJECTS



Specialist in

bulk material handling and biomass combustion
solutions, providing effective solutions
for today's demanding markets.

About us.....

Since inventing the Sliding Frame and Push Floor Discharge Machines way back in the 1960's and 70's, these have today become the industry standard. We have now gone on to produce one of the best Solids Pumps on the market, developed over the past ten years. We also have extensive knowledge of sludge cake handling using screw pumps, piston pumps, screws and chain conveyors and we have our own 'in house' electro/hydraulic department.

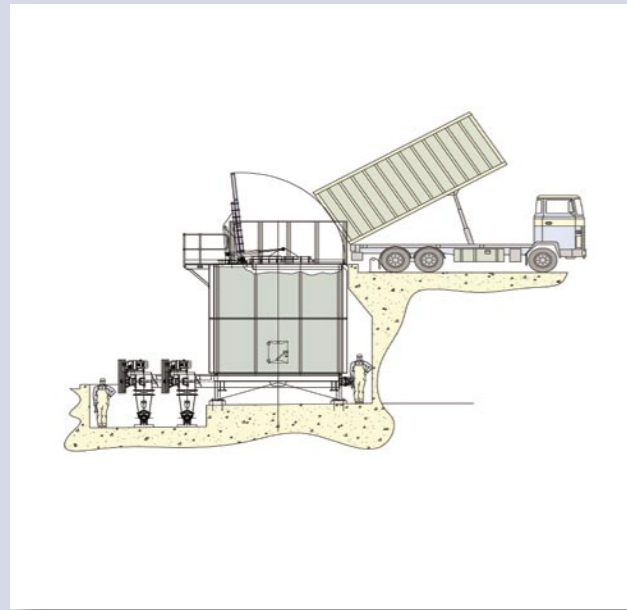
We also have a Combustion Engineering Division where we design, build and commission biomass energy plants up to 50 MWth in combination with steam cycle and ORC, WID compliant plants as well as co-firing installations for biomass and sludge cake with coal and MSW.

We are aware that if we want to continue as a leader in the worldwide market place, we have to be flexible and also in a position to react quickly to our customer

demands and requests. To this end, we have a dedicated team of professionals who are giving a first class service to our ever-increasing client base.

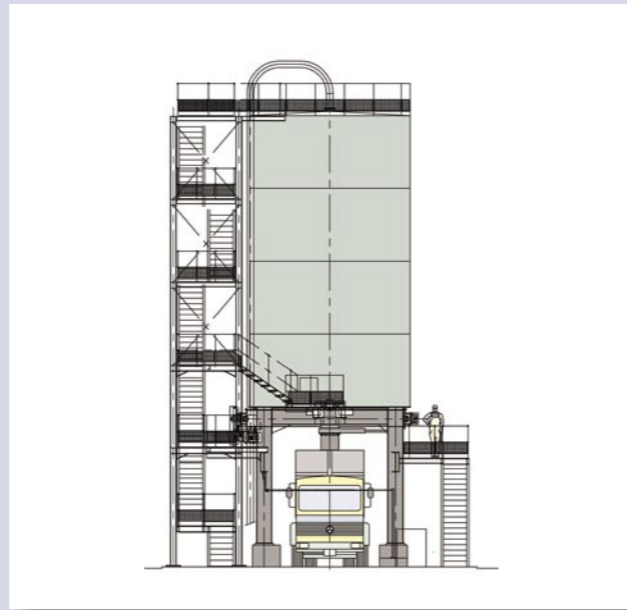
All this knowledge and experience has put us at the forefront of suppliers in these diverse areas and it has meant that we have had an extremely busy year. The projects that you see on the pages of this Newsletter are just a small example of the completed works in the Water Industry sector since the last IWEX.

www.saxlund.co.uk



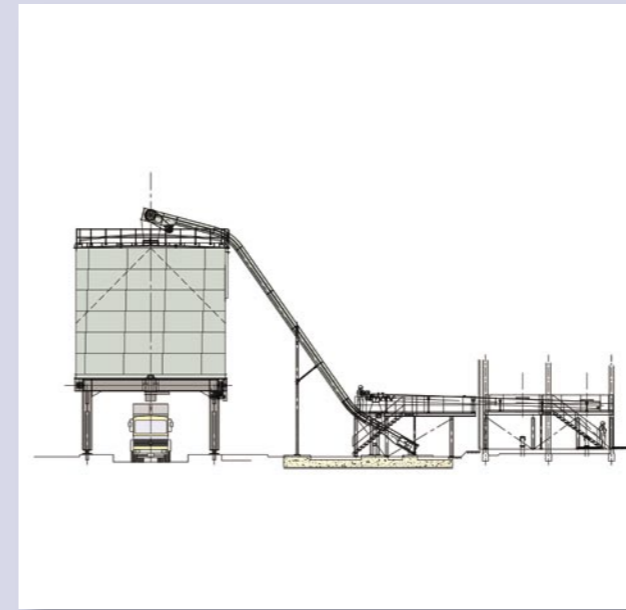
Yorkshire Water Esholt

Saxlund won the contract to design, manufacture and install a Sludge Cake Truck Reception Package for the Esholt WwTW in Bradford for Morgan Est. This reception bunker is fitted with a Saxlund Push Floor system that discharges sludge cake via two metering screws via chutes into Seepex pumps.



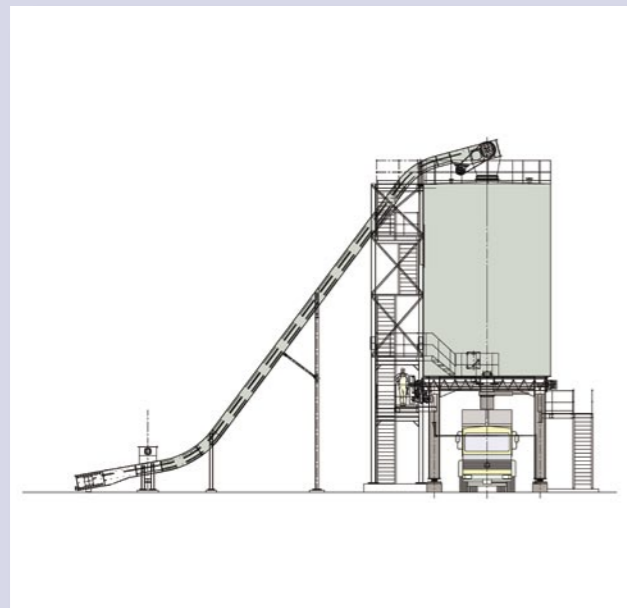
Eign

Saxlund have recently completed a sludge cake Truck Loading Silo for Imtech at Eign WwTW in Herefordshire. This flat bottomed silo is fitted with a Saxlund Sliding Frame discharge machine that discharges via a metering screw at 100m³/h into Trucks beneath the silo.



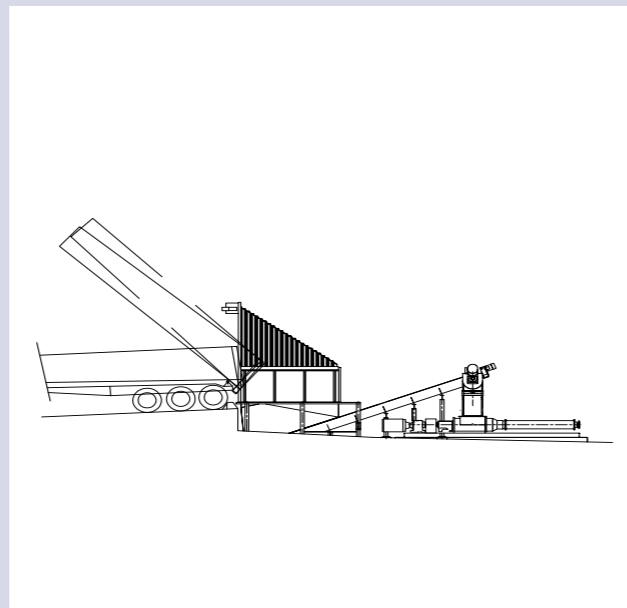
Rochdale

Saxlund were awarded the contract to design, manufacture and install a sludge cake Truck Loading Silo and infeed conveying system for GCA JV at the Rochdale WwTW. The contract was for the collection of cake from a centrifuge and conveying by our special chain conveyor into a flat bottomed silo. Discharge is via our patented twin Sliding Frame and metering screws into Trucks positioned below.



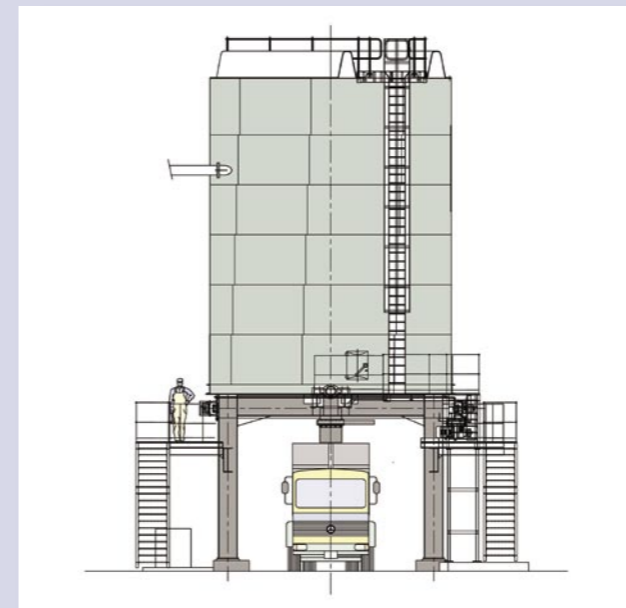
Fazakerley

Saxlund were awarded the contract to design, manufacture and install a sludge cake Truck Loading Silo and infeed conveying system for GCA JV at the Fazakerley WwTW. The system is for the collection of cake from centrifuge, conveying up and into a flat bottomed silo, and discharge using a Saxlund Sliding Frame at discharge screws into Trucks sited below.



Great Billing

Saxlund were awarded the contract by GTM to design, manufacture and install two sludge cake Truck Reception Bunkers for the new Thermal Hydrolysis facility at the Great Billing WwTW in Northamptonshire. The two Truck Reception machines utilise multiple shaftless screws to discharge the cake from the bunker, therefore allowing a shallower excavation and provide a clean, odour free installation.



Flag Fen & Broadholme

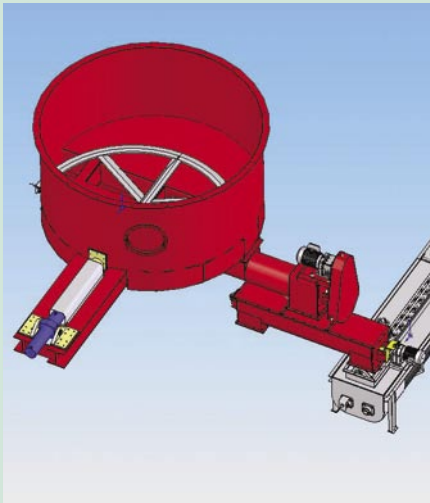
Saxlund were recently awarded the contracts to design, manufacture and install two sludge cake Truck Loading Silos by GTM for the Flag Fen and Broadholm WwTW to serve the Great Billing Thermal Hydrolysis facility. The silos are fitted with Saxlund Sliding Frames to discharge the cake via metering screws into trucks positioned below.



Sligo

Saxlund were recently awarded the contract to supply a sludge cake Truck Reception Silo for the Sligo WwTW in Ireland. The sludge cake is discharged using a Sliding Frame into a discharge screw and then into a Seepex cake blending pump.

SWEDEN'S NEW PROJECTS



Ash silo discharge, Bravida, Umeå Dävamyra

Many types of ash from the combustion of biomass or sludge cake can be non free flowing. Silo discharge, conveying and conditioning are a major part of our business.



Bed dryer equipment, Ena Kraft / Exergy Consulting

Combustion efficiency of wet biomass fuels can be increased by drying using waste heat. In this plant our Push Floor machine is utilised with Exergy Consult.



12MW Bioenergy Plant, Nässjö

This turn key biomass energy plant, fired by wet wood chips mixed with peat generates 12MWth for district heating.

GERMANY'S NEW PROJECT



Germany Borsteler Bio Energie

This 80m³ Push Floor bunker is designed to store and meter feed biomass fuel at a biogas plant.

Offices, subsidiaries and agents in:

Germany
Sweden
United Kingdom

plus many more worldwide

Over 50 years' experience ISO9001

Company Complete Service from design through to manufacture and "after-sales" support

Established network of agencies worldwide to offer service and assistance
Sliding Frame, Push Floor and Tubefeeder™ designs -
Worldwide leading patented technology

Technical design using the latest Project Management tools and
Autodesk® Inventor and AutoCAD® software

Saxlund International Ltd.

11 Freemantle Business Centre
Millbrook Road East
Southampton
SO15 1JR
Tel: + 44 (0) 23 8063 6330
Fax: + 44 (0) 23 8063 6343
E-mail: info@saxlund.co.uk
Website: www.saxlund.co.uk