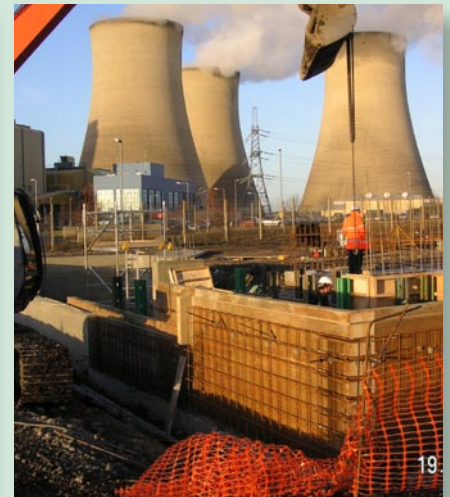


## PLANT REPORT



## Didcot Power Station

### Biomass Co-Firing System

Saxlund International UK won the contract to supply a biomass handling system for the new biomass co-combustion system at Didcot Power Station in Oxfordshire. The scheme incorporated a Saxlund Push Floor system and a large chain conveyor designed to handle a wide variety of biomass fuel materials between a wide range of feed rates. The system is designed with a live capacity of 500m<sup>3</sup> which is maintained at an average height of 4m by mobile plant from the static stockpiles of material within the storage building.

The material is discharged on demand by the reciprocating action of the Push Floor elements, and falls into the lower strand of the Saxlund Scraper Chain Conveyor, which itself discharges the material onto a belt conveyor.

#### Saxlund products for silo and conveying technology:

Solids Handling Pumps ● Troughed Chain Conveyors

Screw Conveyors ● Combustion Plants

Sliding Frames ● Control Systems

Push Floors ● Rotary Valves

Elevators ● Tubefeeders





## Didcot Power Station

### TECHNICAL DATA

**Saxlund Project Ref No.** SUK1053  
**Year of Construction:** 2006  
**Power Station Output:** 1500MWe

#### MATERIAL SPECIFICATION

<b>Material 1:</b> Sawdust	<b>Material 3:</b> Conditioned Ash
Size: 3mm to dust	Size: 3mm to dust
Moisture: 2 - 50%	Moisture: 15 - 25%
Bulk density: 200 - 300 kg/m <sup>3</sup>	Bulk density: 1000 kg/m <sup>3</sup>
Filling Height: 4m	Filling Height: 2.5m max
<b>Material 2:</b> Wood Pellets	<b>Material 4:</b> Palm Kernels
Size: < 30mm	Size: 8mm to dust
Moisture: 2 - 15%	Moisture: 7 - 12%
Bulk density: 500 - 750 kg/m <sup>3</sup>	Bulk density: 600 - 700 kg/m <sup>3</sup>
Filling Height: 3.6m max	Filling Height: 3.9m max

#### SPECIFICATION:

**Discharge Rate:** 60 - 300 m<sup>3</sup>/hr (materials 1,2 & 4) Ash discharge rate 120 m<sup>3</sup>/hr

#### EQUIPMENT

##### 1 x Push Floor Machine

**Type:** ZB-280-6x1389x15155

**Dimensions:** 6 no. element field  
8.3m (W x 15.1m (L)

**Average Filling Height:** 4m

**Storage Capacity:** 500m<sup>3</sup>

##### 1 x Levelling Screw

**Type:** KA 500

**Dimensions:** 8.3m (L) x dia. 500mm

##### 1 x Discharge Chain Conveyor

**Type:** TKF-1550-HBL

**Dimensions:** 1.55m (w) x 21m (L)

**Inclination:** 0 deg. / 31 deg

#### UNITED KINGDOM

Saxlund International Ltd  
11 Freemantle Business Centre  
Millbrook Road East  
Southampton  
SO15 1JR  
Tel: +44 (0) 23 80 63 63 30  
Fax: +44 (0) 23 80 63 63 43  
Email: info@saxlund.co.uk

#### GERMANY

Saxlund International GmbH  
Heidberg 1, 4 + 5  
29614 Soltau-Harber  
Tel: +49 51 91/98 11-0  
Fax: +49 51 91/98 11-39  
Email: info@saxlund.de

#### SWEDEN

Saxlund International AB  
P.O. Box 79  
13722 Västerhaninge  
Tel: +46 8 50 410 580  
Fax: +46 8 50 410 599  
Email: info@saxlund.se

#### USA

Saxlund International Corp.  
3443 N Huetter Rd  
Coeur d'Alene, ID 83814  
Tel: +1 208 665-9112  
Fax: +1 208 664-2810  
Email: mail@saxlund-intl.com

#### SAXLUND WORLDWIDE

30+ offices, agents and subsidiaries in countries around the globe.

